

Energy Conservation Project Update – November 2017

PROJECT INFORMATION:

ENERGY CONSERVATION MEASURE	LOCATION	CONTRACTOR
Energy Management System	Campus Wide	Siemens

AMERESCO PM
Chris Guccione

OBSEVATIONS:

- *New environmental control systems installed throughout campus buildings.*

Energy Savings Totals

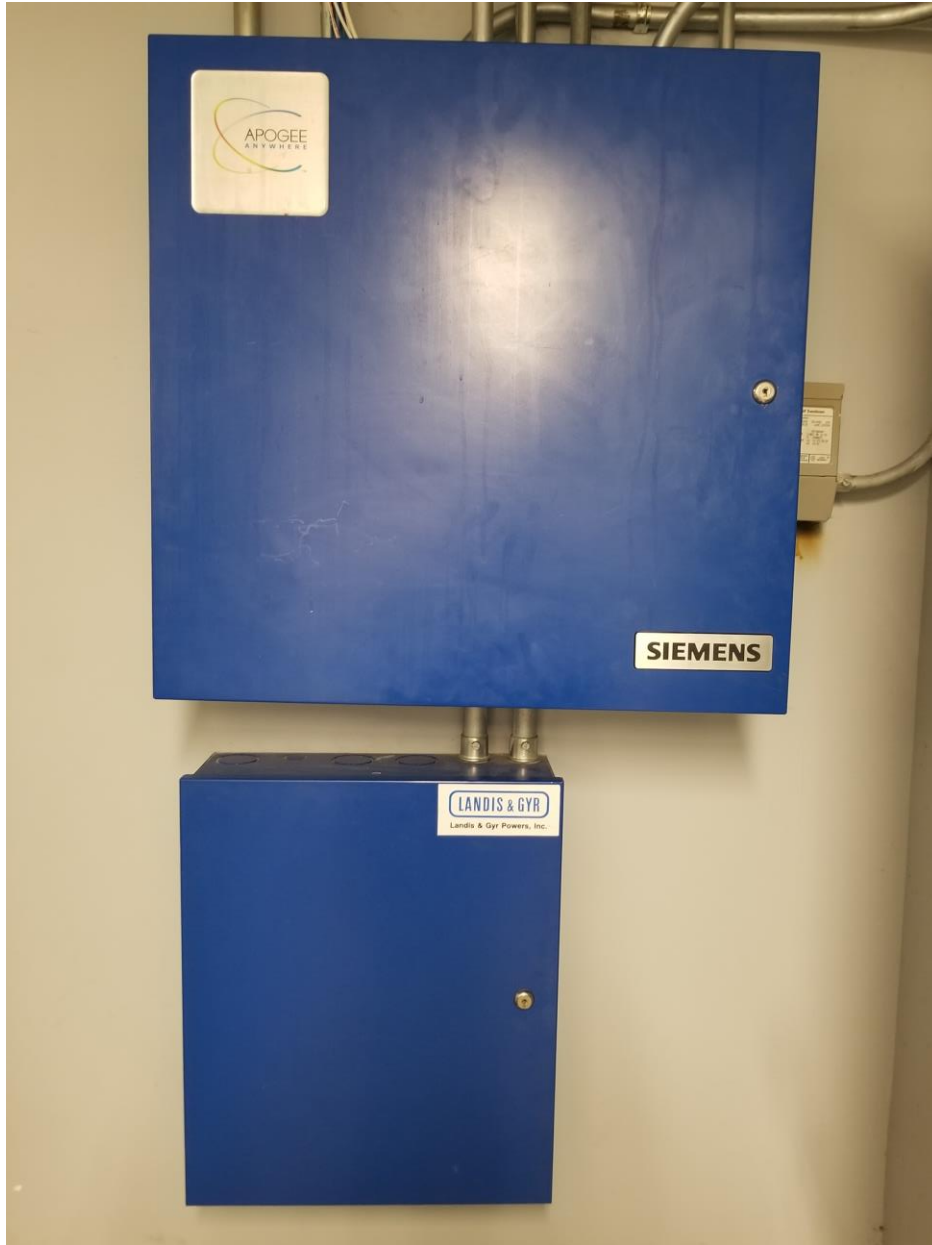
ECM	Annual Savings per ECM					
	Electricity (kWh)	Natural Gas (Therms)	Propane (Gallons)	#2 Fuel Oil (Gallons)	Water (kGallons)	Sewer (kGallons)
ECM4: EMS	320,642	56,295	0	8,944	0	0
ECM 5A: Central Plant Boiler Improvements	18,623	59,324	0	13,034	68	68
ECM 10: VFDs	50,309	0	0	0	0	0
ECM 14A: Water Conservation - Aerators Only	0	922	0	203	242	242
ECM 14B: Water Conservation	1,030	1,425	363	313	2,263	2,263
ECM 15: Weatherization	4,343	14,016	959	2,703	0	0
ECM 18: Vending Machine Controls	40,024	-740	-17	-160	0	0
ECM 24: Efficient Motors	5,653	0	0	0	0	0
ECM 25: Demand Control Ventilation	27,127	6,829	0	1,322	0	0
ECM 26: Transformer Replacement	130,912	0	0	0	0	0
ECM 27: WAC Timers	29,971	0	0	0	0	0
ECM 28: AHU/Rooftop Unit Replacement	3,972	222	0	0	0	0
ECM 40: Kitchen Hood Controls	60,731	14,688	0	3,227	0	0
ECM 41: Repair Heat Recovery Units	23,808	18,147	0	3,987	0	0
ECM 42: Underground Steam and Condensate Piping	0	10,238	0	2,249	536	536
Grand Total	717,144	181,367	1,306	35,821	3,110	3,110

New Variable Frequency Drives



VFDs are a type of motor controller that can cut down energy costs by controlling the speed of electric motors.

Siemens/Apogee Control Panels



Siemens control panels are being installed along with Variable Frequency Drives throughout campus. These systems allow for better energy management of the HVAC systems of campus buildings.