

Get connected! Apogee is thrilled to partner with Rhode Island College to provide you with the most advanced residential network service available. To guarantee that you're connected as soon as you move-in, choose your plan below and follow the steps on the other side to sign up and activate your account. System requirements for broadband service are available at myresnet.apogeenet.net under the Quicklinks section.

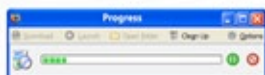
Choose your network speed
then sign up at myresnet.apogeenet.net



High Speed Broadband Internet

BASIC INTERNET

1 Mbps wired download speed



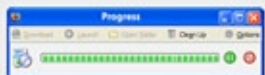
250Mb in 32 minutes

Basic service is free

Account must be activated at myresnet.apogeenet.net prior to using the Internet

GOLD HIGH SPEED

8 Mbps wired download speed



250Mb in 4 minutes

Fall semester \$47.95

Fall & Spring \$95.90

Less than \$10 a month!

All prices include tax
Based on ten month semester

Please note that all speeds listed are for wired Ethernet connections.



DIGITAL VOICE OVER IP (VoIP) PHONE

What is it?

Voice over IP (or VoIP) works by converting your voice into a digital signal and sending it across the high speed broadband network to any phone number you dial.

Can I use my own phone?

Yes. Just plug any phone into the small converter box provided by your school and you'll have your own local phone number with voicemail, call waiting, caller ID, three-way calling and built-in long distance.

Local Phone + 200 LD minutes per semester

\$99.80 per semester*

Local Phone + Unlimited Long Distance

\$139.80 per semester*

*Plus \$85 refundable deposit for digital converter device

Activate and connect to the network



Once your account has been activated, you can start surfing immediately. To connect to the network, plug your computer directly into the wall data jack using an Ethernet cable. (Be careful not to confuse this with a phone cable, which is similar but smaller in size.) Make sure any bridged connections you have are removed or disabled. When you open a browser window, you will be automatically redirected to a login screen. Enter the username and password you received when you activated your account and you will be instantly connected.


Protect your computer



As with any network, there is an element of risk associated with being online. That's why it's important to make sure your computer is up to date with the latest antivirus and spyware control software. Visit myresnet.apogeenet.net for free software downloads and access to articles on using the network safely and legally.

IMPORTANT: Do not share your account username and password with anyone. Your Apogee network account is for use by you and you alone. Sharing your account puts you at risk for serious security and legal issues.

Routers (Ethernet and wireless), access points and other such network devices are prohibited because they cause connection problems and can interfere with the network access of those around you. If you are found to be in violation of this policy, your network access could be suspended. Please review Apogee's end user service agreement at apogeenet.net/pdf/eua.pdf.

Activate your account instantly at myresnet.apogeenet.net, or detach and mail the order form below 

Order form **must be postmarked by August 8th** to ensure that your username and password are available upon move-in.



Select Service Package

	Fall only	Fall & Spring
<input type="checkbox"/> Basic Internet	Activate at myresnet.apogeenet.net	
<input type="checkbox"/> Gold High Speed	\$47.95	\$95.90
<input type="checkbox"/> Phone + 200 Min LD	\$184.80	\$284.60
<input type="checkbox"/> Phone + Unlimited LD	\$224.80	\$364.60

PRICES INCLUDE TAX (PHONE PRICES INCLUDE \$85 REFUNDABLE DEPOSIT)

Mail form with payment to: Apogee
Payment Department
715 W 23rd St, Ste M
Austin, TX 78705

Select Method of Payment

check payment \$_____ please write students name on check

credit card payment credit card address MUST match billing address

card # _____

exp: _____ *security #: _____

*the security # is the last three digits on the back of your credit card. For American Express it is the four digits above and to the left of the credit card number.

signature: _____

credit card will not be processed without cardholder's signature

Accounts with returned checks are subject to service fees. It is the account holder's responsibility to make sure credit charges are made by authorized users.

student information

- I have had an account with Apogee before
 I have never had an account with Apogee

student's name: _____

last 4 ssn: _____

room # (if known): _____

room phone (if known): _____

alt phone: _____

email: _____

required for service

billing/permanent information

*if using a credit card, the name and address associated with the card MUST match the billing information. It is the account holder's responsibility to make sure credit card charges are made by authorized users.

billing name: _____

state id or driver license #: _____

address: _____

daytime phone: _____

alt phone: _____

email: _____

required for account confirmation/receipt